



About the OTSU



The OTSU is a student-led organization dedicated to enhancing the student experience at Ontario Tech University. We provide students with services and amenities that support physical and mental well-being, provide collaborative spaces to pursue passions and foster development, and improve student life through advocacy and leadership.

Our downtown office is on the first floor of Charles Hall (CHA 106), through the doors next to the security office and to the left.

What we do

-  STUDENT RIGHTS & ADVOCACY
-  CLUBS & SOCIETIES
-  ACADEMIC APPEALS
-  EVENTS
-  OTSU ESPORTS
-  TAX FILING
-  FIRST IMPRESSIONS
-  HEALTH & DENTAL PLAN
-  LEGAL SUPPORT
-  GRAD PHOTOS
-  WELLNESS CENTRE
-  PERIOD PROJECT

A Message from the OTSU's VP Downtown

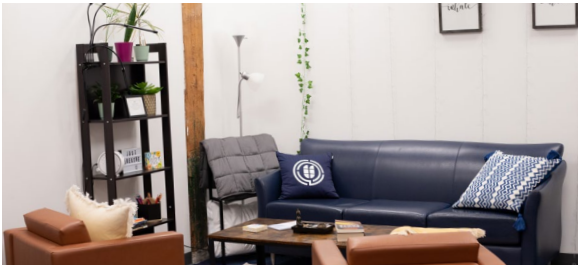


Angelique Dack
VP Downtown
VPdowntown.otsu@ontariotechu.ca



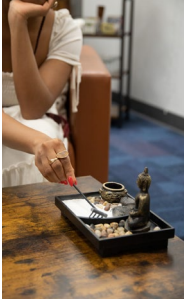
Welcome to the downtown campus, and congratulations on being a downtown student! Ontario Tech's downtown campus is a very unique and exciting environment; from engaging community events to university services and resources, we are sure you'll find your time here very rewarding and meaningful. At the OTSU, we want to ensure that downtown students receive the support they need to get the most out of their university experience. If you require any assistance, have any questions, or want to get involved in the campus community, don't hesitate to reach out!

Wellness Centre



Located in CHA 108 (directly across the hall from the VP Downtown's office) is a dedicated space for student to practice individual self-care activities, including:

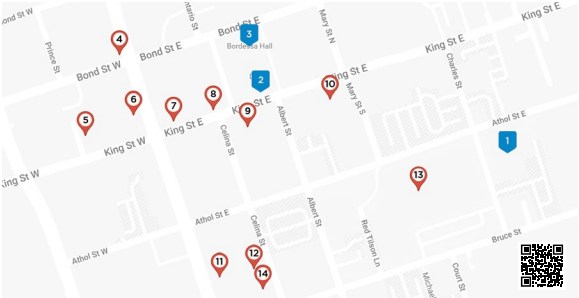
-  MEDITATION
 -  AROMATHERAPY
 -  YOGA
 -  HYDRATION STATION
 -  LACTATION SPACE
 -  QUIET STUDY SPACE
 -  NAP THERAPY
 -  ART & CREATIVE THERAPY
 -  MESSAGES*
- *Messages are subject to time and availability.



To learn more about the space or to book your slot, visit otsu.ca/wellness-centre.



Nearby Hotspots



1. Charles Hall
2. Regent Theatre
3. Bordessa Hall
4. The Bollywood Tacos
5. Coffee Culture Cafe & Eatery
6. Cork & Bean
7. Isabella's Chocolate Cafe
8. Kenzo Ramen
9. Pizzamunno
10. Smoke's Poutine
11. Xtreme R/C & Raceways
12. Archery 2 You
13. Tribune Communities Centre
14. Brew Wizards Board Game Café



Your guide to Ontario Tech's Downtown Area

BROUGHT TO YOU BY THE ONTARIO TECH STUDENT UNION



Subscribe to
THE RUNDOWN
otsu.ca/run-down



otsu.ca



the_otsu



SHA 115
CHA 109



otsu@ontariotechu.ca

This guide is full of QR codes. Scan them to access helpful links and additional information on each section!



Downtown Buildings

Ontario Tech's downtown campus spans four buildings amid Oshawa's vibrant city centre—an eclectic array of cool shops, quaint cafes, theaters, parks, and museums. Downtown students are primarily in the faculties of education and social science and humanities, so if you're looking to meet like minded people, get involved with your society!



Faculty of Education Students' Association
besa@ontariotechu.ca

Ontario Tech Humanities Society
contactus@ontariotechhs.com



Charles Hall

61 Charles Street • CHA (previously DTA)

Includes classrooms, lecture halls, office space, study areas, Student Life, the Faculty of Social Science and Humanities and the Faculty of Education library, the Tuck Shop, and the Social Research Centre.



Regent Theatre

50 King Street East • DTR 100

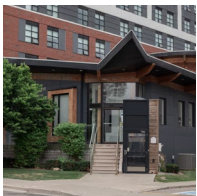
A large lecture theatre for students, and hosts community and cultural events during evenings and weekends throughout the year.



Bordessa Hall

55 Bond Street • DTB

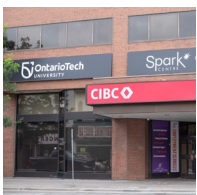
Houses the Center for Evaluation and Survey Research, the Centre on Hate, Bias, and Extremism, and the Digital Culture and Media Lab (Decimal Lab) in addition to academic spaces.



Baagwating Indigenous Student Center

151 Athol Street East • UBISC

The Indigenous Education and Cultural Services, and is a space for students to connect with Indigenous culture and resources.



2 Simcoe Street South

The dedicated floor for Ontario Tech students is predominantly used for offices and psychology research lab space for the Faculty of Social Science and Humanities.

Bus Route Information

As part of your ancillary fees, the UPASS program provides eligible, full-time students with unlimited travel each semester on Durham Region Transit (DRT) routes. The UPASS is digital and available through the PRESTO E-Tickets app.



Download the Moovit app* to see real-time schedules and arrival times for the routes below! *Not affiliated with the OTSU.



DRT 901 PULSE-Simcoe

Downtown Oshawa stop: Centre Southbound @ King

Direct route that connects the north and downtown areas (North-Downtown Oshawa)



DRT 900 PULSE-Highway 2

Downtown Oshawa stop: King @ Simcoe or King @ Centre

Toronto area to Downtown Oshawa



DRT 902 King



Heading to Toronto? These GO routes will take you to other areas of the GTA. GO isn't covered by the UPASS, but does take PRESTO.

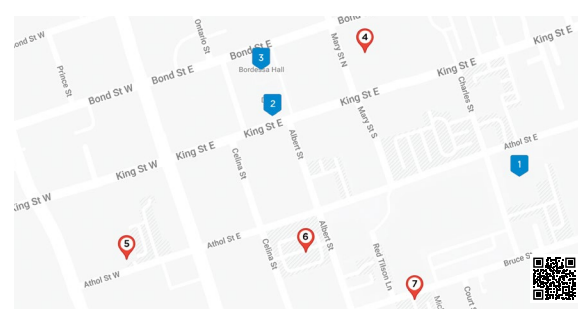
GO 52/56 Oshawa/Oakville

GO 92 Oshawa/Yorkdale

GO 96 Oshawa/Finch

Parking

Students requiring parking are encouraged to independently arrange for monthly parking permits through either the City of Oshawa, or for the Bruce Street Parking lot situated at 71 Bruce Street, email 71bruceparking@gmail.com to arrange for the student rate of \$60/month including HST (subject to change).



1. Charles Hall
2. Regent Theatre
3. Bordessa Hall
4. Municipal Parkade 3
5. Municipal Lot 4
6. Municipal Lot 16
7. 71 Bruce Street Lot

Student Life Services



Career Centre: careercenter@ontariotechu.ca

Get help with resume writing and interview practice, and learn about co-ops, internships and networking events.

Student Engagement & Equity: equity@ontariotechu.ca

Provides advocacy, support, education, and resources, for inclusive, student-centred spaces.

Indigenous Education and Cultural Services:

indigenous@ontariotechu.ca

Resources, events, and workshops, and a home away from home for Indigenous students.

Student Accessibility Services: studentaccessibility@ontariotechu.ca

Ensures students with disabilities get necessary accommodations to access education.

Student Learning Centre: studentlearning@ontariotechu.ca

Academic support in the form of peer tutors and academic specialists, workshops, study halls and one-on-one support.

Student Mental Health Services: studentlifeline@ontariotechu.ca

Counselling, therapy, or support groups and resources to help students overcome any challenges they face.

Downtown Campus Safety

Campus Walk Program

Sept. to April, Monday to Thursday from 6:30-10:30pm

The campus walk program allows students to request to be personally escorted to their car, residence, or other campus locations by trained support staff. To request a campus walk at 61 Charles Street, call 905-721-8668 ext. 5616.

Code Blue Stations

Code blue stations are places students can go to contact security when they feel unsafe. They are equipped with a button that alerts and connects students directly with campus security. These stations are nine-foot red poles with blue lights on top, and at the downtown campus, one is located at the 61 Charles Street parking lot.