



Your guide to Ontario Tech's Downtown Campus

BROUGHT TO YOU BY THE ONTARIO TECH STUDENT UNION

Subscribe to
THE RUNDOWN



otsu.ca



the_otsu



SHA 115
CHA 151



otsu@ontariotechu.ca

About the OTSU



The OTSU is a student-led organization dedicated to enhancing the student experience at Ontario Tech University. We provide students with services and amenities that support physical and mental well-being, provide collaborative spaces to pursue passions and foster development, and improve student life through advocacy and leadership.

Our downtown office can be found by the first floor lobby of Charles Hall (CHA 151).

Our services

-  STUDENT RIGHTS & ADVOCACY
-  CLUBS & SOCIETIES
-  ACADEMIC APPEALS
-  EVENTS
-  OTSU ESPORTS
-  TAX CLINIC
-  FIRST IMPRESSIONS
-  HEALTH & DENTAL PLAN
-  LEGAL SUPPORT SERVICE
-  GRAD PHOTOS
-  WELLNESS CENTRE

A Message from the OTSU's VP Downtown



Dakota Cluett
VP Downtown
VPdowntown.otsu@ontariotechu.ca

Welcome to the downtown campus, and congratulations on being a downtown student! The Ontario Tech downtown campus has a very unique and exciting environment! From engaging community events to university services and resources, I'm sure you'll find your time here very rewarding and meaningful!

Here at the OTSU, we want to help make sure downtown students receive the support they need to get the most out of their university experience! If you require any assistance, have any questions, or just want to get involved in the campus community, feel free to reach out!

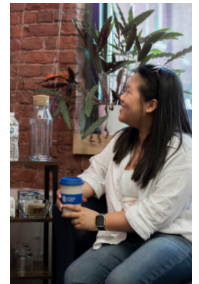
Wellness Centre



Next to the downtown OTSU office at 61 Charles Street (CHA 150). Students can use the Wellness Centre to participate in self-care activities, including:

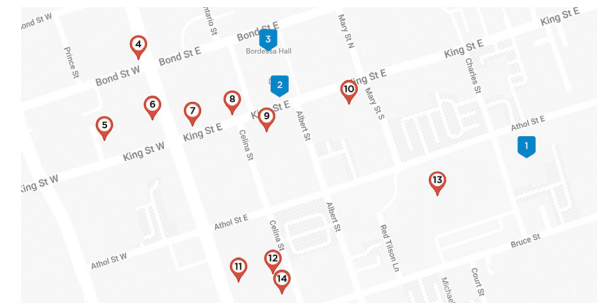
Our services

-  MEDITATION
-  AROMATHERAPY
-  YOGA
-  HYDRATION STATION
-  LACTATION SPACE
-  ACTIVITY CENTRE
-  NAP SPACE



To learn more and book the space visit our office at CHA 151, or online at otsu.ca/wellness-centre.

Nearby Hotspots



1. Charles Hall
2. Regent Theatre
3. Bordessa Hall
4. The Bollywood Tacos
5. Coffee Culture Cafe & Eatery
6. Cork & Bean
7. Isabella's Chocolate Cafe
8. Kenzo Ramen
9. Pizzamunno
10. Smoke's Poutineerie
11. Xtreme R/C & Raceways
12. Archery 2 You
13. Tribune Communities Centre
14. Brew Wizards Board Game Café

Downtown Buildings

Ontario Tech's downtown campus spans four buildings amid Oshawa's vibrant city centre—an eclectic array of cool shops, quaint cafes, theaters, parks, and museums. Downtown students are primarily in the faculties of education and social science and humanities, so if you're looking to meet like minded people, get involved with your society!



Bachelor of Education Society
secretary.besa@gmail.com

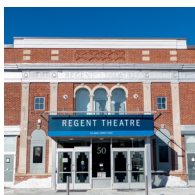
Ontario Tech Humanities Society
contactus@ontariotechhs.com



Charles Hall

61 Charles Street • CHA (previously DTA)

Includes classrooms, lecture halls, office space, study areas, Student Life, the Faculty of Social Science and Humanities and the Faculty of Education library, the Tuck Shop, and the Social Research Centre.



Regent Theatre

50 King Street East • DTR100

A large lecture theatre for students, and hosts community and cultural events during evenings and weekends throughout the year.



Bordessa Hall

55 Bond Street • DTB

Houses the Center for Evaluation and Survey Research, the Centre on Hate, Bias, and Extremism, and the Digital Culture and Media Lab (Decimal Lab) in addition to academic spaces.



Baagwating Indigenous Student Center

151 Athol Street East • UBISC

The Indigenous Education and Cultural Services, and is a space for students to connect with Indigenous culture and resources.



2 Simcoe Street South

The dedicated floor for Ontario Tech students is predominantly used for offices and psychology research lab space for the Faculty of Social Science and Humanities.

Bus Route Information

As part of your ancillary fees, the UPASS program provides eligible, full-time students with unlimited travel each semester on Durham Region Transit (DRT) routes. The UPASS is digital and available through the PRESTO E-Tickets app.



Download the Moovit app* to see real-time schedules and arrival times for the routes below! *Not affiliated with the OTSU.

DRT 901 PULSE-Simcoe

Downtown Oshawa stop: Centre Southbound @ King

Direct route that connects the two campuses (North-Downtown Oshawa)

DRT 900 PULSE-Highway 2

Downtown Oshawa stop: King @ Simcoe or King @ Centre

Toronto area to Downtown Oshawa

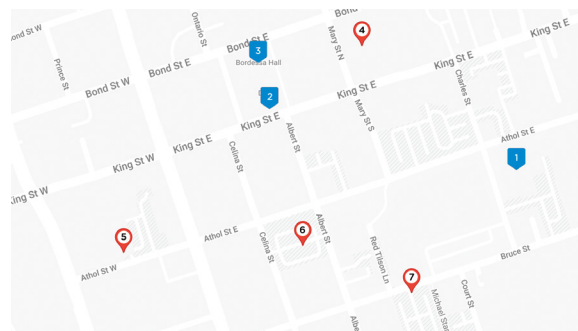
DRT 410 Olive-Harmony



GO 56 Oshawa/Oakville

Parking

Students requiring parking are encouraged to independently arrange for monthly parking permits through either the City of Oshawa, or for the Bruce Street Parking lot situated at 71 Bruce Street, email 71bruceparking@gmail.com to arrange for the student rate of \$60/month including HST (*subject to change*).



1. Charles Hall
2. Regent Theatre
3. Bordessa Hall
4. Municipal Parkade 3
5. Municipal Lot 4
6. Municipal Lot 16
7. 71 Bruce Street Lot

Student Life Services



Career Centre: careercenter@ontariotechu.ca

Will help you with your career journey by offering support in resume writing, job interview practice or connecting you with co-ops or internship opportunities. Career fairs and employer networking events run all year long.

Student Accessibility Services: studentaccessibility@ontariotechu.ca

Works with students with permanent or temporary disabilities to access academic accommodations that fit their individual needs.

Student Learning Centre: studentlearning@ontariotechu.ca

Offers students a welcoming space for academic support in the form of peer tutors and academic specialists, workshops, study halls and one-on-supports in a variety of areas.

Student Mental Health Services: studentlifeline@ontariotechu.ca

Supports and assists you in challenges you might face. Using a stepped care model of service, the most helpful short term counselling, therapy or support group services will be provided to you based on your needs.

Indigenous Education and Cultural Services:

indigenous@ontariotechu.ca

A resource for all students as well as a home away from home for indigenous, first nations, meti and inuit students. Events and workshops that celebrate the diversity of indigenous communities are hosted throughout the year.

Downtown Campus Safety

Campus Walk Program

Sept. to April, Monday to Thursday from 6:30-10:30pm

The campus walk program allows students to request to be personally escorted to their car, residence, or other campus locations by trained support staff. To request a campus walk at 61 Charles Street, call 905-721-8668 ext. 5616.

Code Blue Stations

Code blue stations are places students can go to contact security when they feel unsafe. They are equipped with a button that alerts and connects students directly with campus security. These stations are nine-foot red poles with blue lights on top, and at the downtown campus, one is located at the 61 Charles Street parking lot.